



# BE A PART OF THE LEGACY

## FRATERNITY LIFE RECRUITMENT GUIDE



# WELCOME!

Congratulations on choosing Westminster for your educational experience! Westminster has a variety of opportunities available to you as you embark on your collegiate journey. These opportunities prepare each student to become a leader in a global community. One of these opportunities to explore is the all-encompassing fraternity and sorority system on campus. Westminster's fraternity and sorority traditions date back to 1868, and our community has thrived ever since. Recruitment occurs August 26 through August 29, 2020, and we encourage you to consider becoming part of these traditions.

Academic success is embedded in each fraternity's ideals. Our chapters take steps to help their members succeed and reach their full academic potential. These steps include having mentors, study halls, collaboration with brothers who have similar academic interests, and general academic requirements that must be maintained for chapter membership. Furthermore, the fraternities here at Westminster set high academic standards for themselves and have proven their dedication to scholastic achievement through their semester grades.

Developing leadership and personal skills are additional benefits that being a participant in Westminster's fraternity life can provide you with. In a fraternity, each member has the potential to take on leadership roles within that organization. Whether it is as the President, the social chair, the house manager, or just a member who is heavily involved, each one has responsibilities that can help develop a leader. Leadership is an important value that Westminster promotes and strives to instill in each student, and our fraternity community has many opportunities for such leadership development.

Potential individuals also gain a powerful sense of brotherhood by becoming a member of a fraternity organization. Brotherhood means a variety of things: having a family away from home, a support system to help get you through the hard times, friends to share memories with, and being able to network through alumni. One of the most significant ways that fraternities build connections with each other is through bonding activities. In the past, these activities included cheering on your brothers at their athletic games, bowling, and playing intramural sports together.

Our Greek organizations are also very committed to community service and each organization works to raise money for local and national philanthropic organizations. Our chapters participate in highway clean-up projects, volunteer to work with Fulton youth, sponsor and donate to blood drives, and raise money for one another's philanthropy projects.

Combining all of the wonderful aspects of being a fraternity member at Westminster, students ease their way into becoming the leader in a global community that the college strives to produce. If at any time you have questions, feel free to email our Fraternity Advisor, Payton Cooley at [payton.cooley@westminster-mo.edu](mailto:payton.cooley@westminster-mo.edu) or visit the Fraternity and Sorority Life page on the Westminster College website. We encourage you to also follow us on Instagram at [@westmo\\_ifc](https://www.instagram.com/westmo_ifc).

Thank you for taking the time to consider fraternity life on campus and best of luck to you!

**Mason Needham**  
Interfraternity Council President

# THE NEW MEMBER BILL OF RIGHTS

In conjunction with the inherent rights of all students and members of our community, each potential new member has the right to:

- Be treated as an individual
- Be fully informed about the recruitment process
- Ask questions and receive true and objective answers throughout the recruitment process
- Be treated as a capable and mature person without being patronized
- Ask how and why and receive straight, honest answers
- Express opinions to the diverse fraternity members
- Have confidentiality when sharing information throughout formal recruitment
- Make informed choices without pressure from others
- Be fully informed about the binding agreements implicit in the preference card signing
- Make one's own choices and accept full responsibility for the results of that decision
- Not be persuaded by a fraternity member to resign his bid during the new member period
- Have a positive, safe, and enriching recruitment and new member period

## REGISTER FOR 2024 FRATERNITY FORMAL RECRUITMENT



Fall Fraternity Recruitment events will be from August 18 -September 7, 2024.

Please use this QR code to register for recruitment. Please email [Payton.Cooley@wcmo.edu](mailto:Payton.Cooley@wcmo.edu) if you have any questions about formal recruitment or the registration process.

# WESTMINSTER COLLEGE INTERFRATERNITY COUNCIL EXECUTIVE TEAM



**MASON NEEDHAM**  
INTERFRATERNITY COUNCIL  
President



**HAYDEN INMAN**  
INTERFRATERNITY COUNCIL  
VP of Recruitment



**NATE NAUMANN**  
INTERFRATERNITY COUNCIL  
VP of Member Development



**CARTER MURRAY**  
INTERFRATERNITY COUNCIL  
VP of Judicial Affairs



**LANE MARTIN**  
INTERFRATERNITY COUNCIL  
VP of Community Relations



**KEI MCCALL**  
INTERFRATERNITY COUNCIL  
VP of Health & Safety

# WESTMINSTER COLLEGE INTERFRATERNITY COUNCIL

The Interfraternity Council (IFC) at Westminster College is the governing body of the fraternities on campus. The council is composed of 6 executive officers, along with a delegate from each fraternity. The IFC Executive team is comprised of current members of the fraternities on campus and they serve the fraternity community through programming, educational opportunities, and advocating for the best interests of the fraternity members on campus.



**BETA THETA PI**  
ALPHA DELTA CHAPTER



**DELTA TAU DELTA**  
DELTA OMNICRON CHAPTER



**KAPPA ALPHA ORDER**  
ALPHA ETA CHAPTER



**PHI DELTA THETA**  
MISSOURI BETA CHAPTER



**SIGMA ALPHA EPSILON**  
MISSOURI GAMMA CHAPTER



**SIGMA CHI**  
DELTA TAU CHAPTER

## RECRUITMENT COUNSELORS

Recruitment Counselors are active fraternity members selected to assist potential new members (PNMs) throughout the Formal Recruitment process and beyond. Each Recruitment Counselor is an active member of their chapter. During the week leading up to recruitment, Recruitment Counselors will meet the PNMs and be prepared to discuss important information regarding topics that a PNM might need to be aware of. During recruitment week, Recruitment Counselors will hand out schedules and monitor recruitment events to ensure that everything runs smoothly. Most importantly, they will ensure that PNMs are safe and taken care of. This might include asking all PNMs to stay on the sidewalk and avoid running, and/or walking with a PNM to their next event.

# WESTMINSTER COLLEGE INTERFRATERNITY COUNCIL VALUES

## THE IFC CREED

We, the Interfraternity Council, exist to promote the shared interests and values of our member fraternities: leadership, service, brotherhood, and scholarship. We believe in Fraternity and that the shared values of Fraternity drive the IFC to create better communities, better chapters, and better men.

We work to advance the academic mission of the host institution, to enable fraternal organizations to grow and thrive through collaboration and teamwork, to provide an outlet for self-governance and accountability, and to model and teach ethical leadership. In a spirit of mutual support and betterment, we, the men of the Interfraternity Council, pledge to elevate the Ritual and the values of the member organizations.

### LEADERSHIP

### SERVICE

### BROTHERHOOD

### SCHOLARSHIP



# FRATERNITY RECRUITMENT SCHEDULE

## WHAT TO EXPECT

Men's formal recruitment at Westminster College is unique and one of a kind – you should expect a high-energy and positive atmosphere that showcases the six fraternities and their members. Throughout formal recruitment do not be surprised if you are asked questions by each fraternity or their members – these questions are an easy and comfortable way for the members to get to know you as a person.

## PRE-RECRUITMENT EVENTS

**INFO SESSIONS** - August 18th | 7pm | CSC Lecture Hall

**HOUSE TOURS** - August 19th | 5:30pm | Fraternity Houses

**FINANCIAL TRANSPARENCY** - August 20th | 7pm | CSC Lecture Hall

**ALL FRATERNITY DODGEBALL** - September 5th | 5:30pm | HAC Gym

## INDIVIDUAL CHAPTER EVENTS

### ROUND 1

**Kappa Alpha Order** - Aug. 21st | 5pm

**Beta Theta Pi** - Aug. 21st | 7pm

**Delta Tau Delta** - Aug. 22nd | 5pm

**Phi Delta Theta** - Aug. 22nd | 7pm

**Sigma Alpha Epsilon** - Aug. 23rd | 5pm

**Sigma Chi** - Aug. 23rd | 7pm

### ROUND 2

*All events at 6pm*

**Sigma Alpha Epsilon** - August 26th

**Beta Theta Pi** - August 27th

**Sigma Chi** - August 28th

**Kappa Alpha Order** - August 29th

**Delta Tau Delta** - September 3rd

**Phi Delta Theta** - September 4th

# FRATERNITY RECRUITMENT SCHEDULE

## PREFERENCE ROUND

**DATE:** September 6th

**LOCATION:** Meet at Sloss Lounge

**TIME:** 5:00pm

**# OF CHAPTERS VISITED:** Up to 3 fraternities

**WHAT TO WEAR:** Attire is more formal. Please wear business attire (dress slacks, button-down shirt, dress shoes - tie & sport coat is optional)

## BID DAY!

**DATE:** September 7th

**LOCATION:** Hunter Activity Center (HAC)

**TIME:** Evening / Night

**WHAT TO EXPECT:** You will meet with your Recruitment Counselor and group in HAC Gym to review your membership invitation(s).



# DISCUSSION TOPICS FOR RECRUITMENT ROUNDS

## MEET THE GREEKS / HOUSE TOURS

This is the first opportunity to meet members and learn about the chapters. This event will include a tour of each fraternity house and provides an ideal time for chapters and PNMs to discuss housing options and requirements for members.

## INFORMAL EVENTS

Meet chapter members and ask them questions in a fun, informal setting both before and during formal recruitment. These events help to provide a maximum number of times to meet members.

## OPEN HOUSE ROUNDS

Identify the chapters' core values and your values; how are they alike? What attracted you to fraternity life? What are you doing currently to get involved on campus? What do you hope to gain from fraternity membership? Do you have a philanthropic cause that is important to you? How do active members actively support their philanthropy?

## PREFERENCE ROUNDS

What attracted you to this chapter? What are the values of this chapter? How do active members actively live out their chapter values? What have the active members gained from membership? What does this chapter mean to its active members? What does it mean to be a member of this chapter? How are you feeling at this moment?

# FINANCIAL COMMITMENT

There is a cost associated with fraternity membership. Members of fraternities pay dues, which go toward different programming efforts, educational opportunities, and events planned by the organization. The cost of dues might vary from semester to semester and from chapter to chapter. Discussing finances with the chapters prior to bid day is important to understand the financial commitment of the chapters you are interested in joining.



# BETA THETA PI

## ALPHA DELTA CHAPTER

**National Founding Date:** August 1839

**Local Founding Date:** 1868

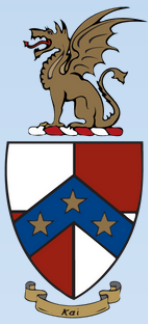
**Colors:** Delicate Shades of Pink & Blue

**Philanthropy:** CHAD'S Coalition

**Nickname:** "Beta"

The Alpha Delta Chapter of Beta Theta Pi prides itself on transforming and developing Men of Principle for a principled life. We do that through our 5 core values: Mutual Assistance, Intellectual Growth, Responsible Conduct, Integrity, and Trust. As a fraternity, Beta Theta Pi feels these values aren't just tools to help you succeed in college but to thrive in life. Being a member of Beta Theta Pi is an endless process of building, polishing, and applying what you learn to be able to grow into your true potential. The brotherhood found at Beta Theta Pi is a brotherhood for life, supported by members striving for greatness while pushing their brothers to be great.





# BETA THETA PI

## ALPHA DELTA CHAPTER

Gentlemen,

My name is Kendall Outlaw, President of Beta Theta Pi, and I want the first to congratulate you on your decision to attend Westminster College; a college that has such prestige and tradition rooted deep in its history. With that being said, much of Westminster's tradition is based on its Fraternity and Sorority community. My life changed when I joined Beta. I was immediately surrounded by men with the same ideals, morals, and goals. Those men pushed me to be the best I could and encouraged me to continue to grow and support the younger guys. The memories I have made and continue to make with my brothers at Beta are ones I will never forget, and my love for Beta will never die. As a senior, my time here is running out. You are what makes this fraternity great, the new actives who join and grow into their roles and move the fraternity forward. We were the first fraternity on this campus over 157 years ago, and I'm looking for guys to carry our long and proud traditions. Please feel free to reach out to me with any questions.

Sincerely,

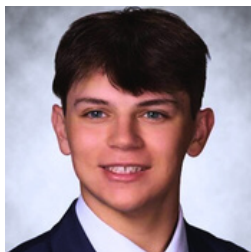
**KENDALL OUTLAW**

President of the Alpha Delta Chapter of Beta Theta Pi

What I enjoy about fraternity life is the network system it provides; it has allowed me to build connections with not only members of my fraternity but also with the rest of Greek life on campus. Being part of fraternity life allows you to meet alumni, which can give you an advantage when finding your career path after graduation. The networking has also given me great skills to grow as a leader and has also allowed me to meet other brothers of my fraternity on a national stage when attending conventions and other leadership programs.



**KENDALL OUTLAW**  
President of Beta Theta Pi



**NOAH TEPE**

I joined rush to become more apart of something bigger than myself. Beta Theta Pi became that something with its unique feeling among the members. The men of Beta have become family and I look forward to growing this family for generations to come.



# DELTA TAU DELTA

## DELTA OMICRON CHAPTER

**National Founding Date:** October 1858

**Local Founding Date:** 1939

**Colors:** Royal Purple, Yellow Gold, White

**Philanthropy:** Juvenile Diabetes Research Foundation

**Nickname:** "Delt"

The Delta Omicron chapter of Delta Tau Delta at Westminster College takes pride in its long history of being comprised of the most involved and successful men on campus. In order to do this, Delta Tau Delta fosters an environment that promotes hard work, dedication, and passion for everything that we do. This allows us to have a strong balance between academics and the many extracurricular activities that we are not only a part of but are leaders of. Delta Tau Delta not only provides men with an outstanding college experience but gives them the foundation that allows our brothers to thrive in the real world.

Go anywhere on campus and you will see brothers of Delta Tau Delta involved. However, we are not just members of clubs and on teams but are the leaders, captains, and presidents of them. Some of the clubs and organizations that Delta Tau Delta is involved in include Student Ambassadors, First Year Mentors, The Skulls of Seven, Blue Blazers, and many more. Delt's are also heavily represented on many varsity-level athletic teams including soccer, basketball, baseball, and golf.

At Delta Tau Delta, our commitment to living lives of excellence leads us to excel inside and outside of the classroom, not only at Westminster College, not only in Missouri but on the national level as well. Delta Omicron is often awarded a Hugh Shields Award for Chapter Excellence, which is only given to the top ten chapters in the nation. Along with leaving a strong mark nationally, Delta Tau Delta is always a top-performing academic fraternity at Westminster. But it is no secret that the Delt's have the most fun on campus. We take great pride in having the time of our lives with our brothers and still being able to lead the campus both academically and in extracurricular activities. If you are wanting to be able to balance everything college throws at you, and still come out with a great experience that will prepare you for the rest of your life, Delta Tau Delta is the fraternity for you.





# DELTA TAU DELTA

## DELTA OMICRON CHAPTER



What I enjoy most about Greek life is the ability to make connections with people I otherwise would have not been able to connect with. I have made some of my best friends through my experience in Greek life and made memories I will hold for the rest of my life. Without Greek life, I would not be the man or leader I am today.



**WYATT HAMMOND**  
President of Delta Tau Delta



**DAVIN MATHES**

The reason why I chose to go through rush in the beginning was because I wanted to be sure I made connections coming into a new school. Throughout the rush process, Delta seemed like a great option because they had a great group of guys that I could easily connect with, and they found education to be of great value. I figured that by becoming a delta I could gain lifetime friendships and put myself in a position surrounded by people who will contribute to any future successes I might have.



# KAPPA ALPHA ORDER

## ALPHA ETA CHAPTER

**National Founding Date:** December 1865

**Local Founding Date:** 1890

**Colors:** Crimson & Old Gold

**Philanthropy:** Muscular Dystrophy Association

**Nickname:** "KA"

The Alpha Eta Chapter at Westminster College strives to create a lifetime experience centered on duty, honor, character, and gentlemanly conduct. Alpha Eta provides a rich educational and social environment where all members have the opportunity to become leaders. One thing that sets us apart is that we are not a fraternity, but an order. We believe that you are entering college with your values already intact. You've learned from your family and friends what's right and wrong. We focus not on molding you to fit our values and purpose like a typical fraternity, but to build upon shared values you already have. Kappa Alpha Order is like a compass, keeping you pointed in a great direction for a successful future. We center this moral compass around six core values: Reverence, Gentility, Knowledge, Leadership, Brotherhood, and Excellence. Reverence, for God and Women, reminds us that there is a Higher Being in our lives. This is represented by our motto "Dieu et Les Dames", meaning 'God and Women' for whom we hold to a higher standard than ourselves. Gentility comes from the Age of Chivalry in which we idealized and honored women. We continue this practice today showing respect to all that we encounter on campus, in our community, and in our career. Knowledge is not just success in the classroom, but a quest we set out upon to achieve continuous lifelong learning in order to develop our character throughout our lives. Leadership comes from the belief that KA's are leaders among men. We set the proper example of the modern gentlemen. We also serve mankind in whatever manner we are called. We demonstrate courage and perseverance as we both lead and follow. Brotherhood means to us that we are bound to each other, not for four years, but for life. We befriend and assist our brothers, especially in times of need. Excellence is what we strive for. Onward and upward is our direction. We believe that hard work and dedication can bring us closer to achieving excellence, with a vision of making the world a better place. Kappa Alpha is a dominant force in all aspects at Westminster College. As a member, you will be surrounded by men who will push you to succeed in whatever you are involved in here on campus. When you think Greek Life, think Kappa Alpha. Come join our lifelong brotherhood and be a part of something bigger.





# KAPPA ALPHA ORDER

## ALPHA ETA CHAPTER



When I first got to Westminster, I was uninterested in rushing. I decided to give it a shot and go through the whole rush process. Going through the process gave me a better understanding of what it entails. These include things like learning what Greek Life's purpose is, what comes along with it, and what the process would look like if I decided to join. As you can see I went through with rushing, and the experiences and knowledge I have gained since have been something that I would not have gotten if I had not rushed. I joined Greek Life because I wanted to gain more connections and meet new people on campus. The opportunities that have come to me because of Greek Life are something I would not have gotten if I had not decided to be a part of it. Joining KA has allowed me to grow as a leader and person. I have been a part of multiple leadership roles within our chapter and campus, such as Student Ambassador. Joining KA has helped me grow as a student because of all the people around me who encourage me to be the best possible version of myself. KA has introduced me to many connections that I would not have been able to make anywhere else. Lastly, Greek Life has brought new people into my life that I know will be lifelong friends. My college experience would not have been the same if I had decided not to join Greek Life as a freshman. I highly recommend giving Greek Life a chance



**HOLLIS MAKINGS**  
President of Kappa Alpha Order



**DEREK ARCHER**

I decided to rush because I wanted to meet new people and learn more about Greek life. As a freshman coming to a new school, I didn't know many people, so rushing gave me the opportunity to make many new friends from different backgrounds. During rush, I was able to learn about Greek life, such as what their purpose is, what they do, and what it would look like if I joined. Rushing enhanced my first-year experience at Westminster by giving me a foundation of people to talk to and receive guidance from.



# PHI DELTA THETA

## MISSOURI BETA CHAPTER

**National Founding Date:** December 1848

**Local Founding Date:** 1880

**Colors:** Azure & Argent

**Philanthropy:** ALS Association / Live Like Lou Foundation

**Nickname:** "Phi Delt"

**Congratulations on choosing Westminster College. As a student, you will learn much that Westminster offers, including a 10:1 faculty-student ratio and a 98% job placement rate. Most importantly, Greek Life here at Westminster has much to offer its students. Phi Delta Theta has had the highest GPA among fraternities on campus for ten straight semesters. We pride ourselves on friendship, sound learning, moral rectitude, and brotherhood. Furthermore, Phi Delt transforms its members into a leader in college and life in the workforce. Additionally, Phi Delt is the most diverse house on campus, with brothers in many different majors, clubs, and sports. In addition to our strong brotherhood bond, we also have the largest social budget on campus. Our alums constantly give back to our brothers. Mainly, there are multiple scholarships available for members. For instance, new members can earn scholarships for achieving a good GPA. Our alums care deeply about the success of our chapter and members. In essence, Phi Delta Theta is an asset to one's college career.**







# PHI DELTA THETA

## MISSOURI BETA CHAPTER



If you told me three years ago that this son of a cattle farmer from Fulton would one day write a "president's message" you would have made my day. I was completely unprepared for Greek Life at Westminster, I did not know what it was or what a fraternity did. I came to campus looking for a place to simply make a few friends. From day one, Phi Delt's brothers welcomed me like extended family and truly made a home for me on campus. Getting to live with the guys has shaped my interests and post college aspirations far beyond what I could have managed. Greek life at Westminster will surprise you, the best bet for success is to look for where you belong and can grow like Phi Delt was for me.



**DANIEL BACKER**  
President of Phi Delta Theta



**HENPY WARFEL**

When coming to college I did not think about joining Greek Life. Since having to move in early due to cross country practice starting a few weeks before school started there was not too many people on campus. I found myself just sitting in my room and not being social. During rush I kept finding myself just hanging out with Phi Deltas. When it came to choosing what fraternity I wanted to rush, I chose Phi Delta Theta. I liked that they had the highest GPA on campus and that they were a dry house. They also don't do any form of hazing when being a pledge. I'm excited to be a part of Phi Delt and looking to grow the fraternity. Looking forward for the time I have left with my brothers



# SIGMA ALPHA EPSILON

## MISSOURI GAMMA CHAPTER

**National Founding Date:** March 1856

**Local Founding Date:** 1949

**Colors:** Royal Purple & Old Gold

**Philanthropy:** Children's Miracle Network, Be the Match, Movember

**Nickname:** "SAE"

The brothers of the Missouri Gamma Chapter of Sigma Alpha Epsilon here at Westminster College pride themselves on being true gentlemen in all facets. Whether on campus, to each other, at social events, or in the community, we hold ourselves to a higher standard. To begin, we would like to congratulate you on choosing Westminster College for the next chapter of your life. Your next four years will be memorable, and there are numerous opportunities this college offers you. One of the most enticing opportunities on campus is Greek life.



The brotherhood that you will manifest and grow between the people you meet in the chapter will be a lifelong bond. Brothers that act as a support system emotionally, academically, and socially, throughout your college career. Emotions are accepted within our brotherhood and no matter what is happening in a brother's life, the one thing that will stay stagnant is the support system we offer through love and companionship. The involvement on campus from our fraternity is seen. From brothers being a part of numerous athletic teams, along with organizations on campus, such as Student Government and Blue Blazers, we are heavily involved. Intramurals, holding philanthropy events, performing arts club, IFC, dean's list, and various honors clubs, are only a couple of things we do on campus and organizations we are apart of on campus to be involved.





# SIGMA ALPHA EPSILON

## MISSOURI GAMMA CHAPTER

Sigma Alpha Epsilon does not end when graduating. This is a lifelong commitment made when joining. This includes access to our vast number of alumni. If you did not know, Sigma Alpha Epsilon is the largest fraternity by number in existence. The networking opportunities that are open to you when joining this fraternity are endless. Scholarship opportunities are offered nationally and locally through Sigma Alpha Epsilon. We understand the financial obligation of college and being a part of a fraternity, so we offer opportunities to help with that. Locally, a thousand-dollar scholarship is given, both during the spring semester and fall semester. Nationally, over \$100,000 worth of scholarships are given yearly.

As we can see, Sigma Alpha Epsilon is a positive fraternity to be a part of. In all ways, you can be involved on campus. You gain a band of friends you can call brothers for life. Opportunities to advance your life after college. Most of all, you as a person will grow and flourish. Joining Sigma Alpha Epsilon will be something to be proud of and you will be happy making this decision.



Joining Greek life has been the best decision I have made since coming to Westminster. I have made multiple relationships that will last a lifetime. Greek life has also provided me with support for after college. Our alumni networking is amazing and provides multiple members with jobs after graduation. I also feel as if I have grown as a person thanks to my fraternity. I have been connected with people that are different than me which caused me to come out of my shell. This is all thanks to joining Greek Life.



**BRYCE WESTERFELD**  
President of Sigma Alpha Epsilon



**AIDAN HOWELL**

What it has meant for me to be a part of fraternity life at Westminster College and what it has meant to me to be a new member of Sigma Alpha Epsilon. Being in fraternity life has been a fun experience having gone through the rush experience last semester. This semester being a new member has given me a group of guys I can count on and fond memories for my first year of college. Being part of SAE has helped me to be a better man and has given me a path to becoming a true gentleman and I am incredibly grateful to part of such a great house.



# SIGMA CHI

## DELTA TAU CHAPTER

**National Founding Date:** June 1855

**Local Founding Date:** 1935

**Colors:** Blue & Old Gold

**Philanthropy:** Huntsman Cancer Institute

**Nickname:** "Sig Chi"

Welcome to Westminster College! We want to congratulate you for choosing this amazing campus and we're glad to see you on campus soon! Westminster College has many opportunities during and after school, with internship and study abroad programs that help expose students to do something they might do. As brothers of the Delta Tau Associate Chapter, we cherish the brotherhood and bonds that the fraternity creates, so we encourage you to reach out and meet new people or discover new things. Because joining a fraternity is a big decision, we encourage you to choose the one that best fits you.



Now, what is Sigma Chi? Sigma Chi is a fraternity whose roots are established in the core ideals of Friendship, Justice, and Learning. Sigma Chi differs from other fraternities because it focuses on the lifelong commitment to these ideals, and is the largest fraternity in the United States. In addition to the 235 undergraduate chapters, Sigma Chi also boasts 145 Alumni chapters- chapters that are for post-graduation networking support and continued lifelong bonds and charitable giving. The purpose of Sigma Chi is to cultivate, maintain, and accomplish the ideals of friendship, justice, and learning while promoting leadership skills, and by adopting our 7 "Founders" traits, to build a "Man of Good Character". The Delta Tau Associate Chapter is among those who uphold and promote these ideals so that our members can help their families, colleges, communities, and workplace. We would like to, once again, welcome you to our wonderful campus and we're excited to meet you in the fall.

In Hoc,  
The Men of Sigma Chi



# SIGMA CHI

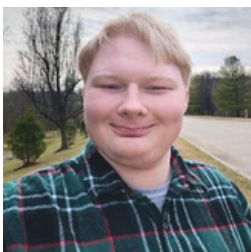
## DELTA TAU CHAPTER



The thing I enjoy most about fraternity life is the relationships and bonds that have been created. I love being a part of something that is bigger than myself.



**SHANE BOLLE**  
President of Sigma Chi



I joined Sigma Chi because I wanted to be with people I could trust, brothers with whom I could form lifelong bonds. As a fellow fraternity brother, I now have people to help guide me, and I can help to guide others as well

**TYLER SKARSTAD**

# FRATERNITY & SORORITY TERMS

- **ACTIVE:** An initiated member of a fraternity/sorority chapter
- **ALUMNAE(F) / ALUMNUS(M):** Any initiated member of an organization who has graduated from college or left college prior to graduation
- **BID:** An invitation from a sorority or fraternity to go through that chapter's New Member Education program
- **BROTHER:** An initiated member of a fraternity; it is used as a term of address when an initiated member refers to another member
- **CHAPTER:** Group of collegians, officially chartered and recognized at a given college or university
- **CHAPTER ADVISOR:** An alumnae/alumnus who establishes and maintains a close advisory relationship with a chapter and serves as a teacher, counselor, and friend
- **COLONY:** A new chapter, or chapter returning to campus after an absence; a colony is not a full-fledged chapter of an organization, but is in the process of becoming a chapter and receiving its charter
- **COMMUNITY SERVICE:** Work done by members of a fraternity or sorority to support an organization, cause, or the greater community
- **CONTINUOUS OPEN BIDDING (COB):** Panhellenic sororities term for ongoing, informal recruitment; chapters participate in COB if they have not yet met the chapter total limit set by Panhellenic
- **FOUNDER:** One who originates or establishes a fraternity or sorority
- **GOOD STANDING:** The status of a chapter or an individual when all responsibilities and standards have been met
- **GREEK:** Term applied to all sororities and fraternities
- **HAZING:** While Westminster College and the state of Missouri have a legal definition of hazing, generally speaking, hazing includes any action, participated voluntarily or involuntarily, by any member of an organization that causes, or is likely to cause physical, mental, or emotional harm. *Please see the Hazing Statement or direct questions to IFC or Panhellenic.*
- **HOUSE:** A chapter's living or meeting facility; never used as a substitute word for "chapter." For instance, a man or woman pledges a chapter, not a house

# FRATERNITY & SORORITY TERMS

- **INITIATE:** A man or woman who has undergone the initiation ceremony into a sorority or fraternity
- **INITIATION:** The process by which a new member becomes an active member of an organization
- **INTERFRATERNITY COUNCIL (IFC):** The governing body of fraternities
- **INTRAMURALS:** Fun sports competitions between the sororities, fraternities, and other organizations on campus; sports include basketball, volleyball, indoor soccer, and many more
- **LEGACY:** A sister/brother, son/daughter, or grandson/granddaughter of an initiated member of a sorority or fraternity
- **MEMBER:** Someone who has been initiated into his or her chapter
- **NEW MEMBER:** The term used to describe a member who is not yet initiated into an IFC or Panhellenic chapter
- **PANHELLENIC COUNCIL:** The governing body of sororities
- **PHILANTHROPY:** Efforts by fraternities/sororities to raise money for an organization and promote human welfare
- **POTENTIAL NEW MEMBER (PNM):** The term used to describe a man or woman seeking membership in an IFC or Panhellenic organization through the process of Recruitment
- **RECRUITMENT:** Generally refers to the mutual selection process in which those seeking membership in a fraternity/sorority organization participate; consists of Open Houses and "Formal Recruitment"; organized series of events allowing organizations and PNM's to meet one another
- **PI CHI / RECRUITMENT COUNSELOR:** A member of a fraternity or sorority who disaffiliates during formal recruitment and assists potential new members through the recruitment process

# FREQUENTLY ASKED QUESTIONS

- **WHY SHOULD I JOIN A FRATERNITY?**

Joining a fraternity provides each member with a group of friends and brothers that can help students adjust to life on campus. Fraternity members are involved in many organizations, participate in philanthropy and service events, and enjoy building relationships with their fellow fraternity members.

- **CAN I GO THROUGH FRATERNITY RECRUITMENT IF I AM NOT A FIRST-YEAR STUDENT?**

Absolutely! You can participate in recruitment as long as you are a full-time, undergraduate student.

- **WHEN DOES NEW MEMBER EDUCATION OCCUR?**

On the last day of formal recruitment, individuals will receive bids from their respective chapters. Following the acceptance of the bids from a chapter, the individuals will begin the new member period for the chapter. Each chapter's new member period ranges in length and topics.

- **WHAT RESOURCES ARE AVAILABLE DURING THE FORMAL RECRUITMENT PROCESS?**

Each individual who is participating in the formal recruitment process will be assigned recruitment counselors. The recruitment counselors assist in the logistics of the recruitment process. They walk with the PNMs to each of the fraternity chapters and provide information and answers to recruitment questions throughout the process. In addition, the IFC executive board and IFC advisor are also available for support in the recruitment process.

- **WHAT ARE PRE-RECRUITMENT EVENTS?**

Prior to the formal recruitment, there will be specific IFC events for each of the respective chapters on campus. During this time, the PNMs and active members have the ability to get to know each other and have conversations. This helps the PNMs to gain a better understanding of each individual chapter and connect with the members.

- **AM I OBLIGATED TO JOIN A FRATERNITY IF I PARTICIPATE IN THE FORMAL RECRUITMENT PROCESS?**

You are not obligated to join a fraternity just because you participate in Formal Recruitment. You are encouraged to participate in Recruitment because it is an excellent opportunity to learn about fraternity life and meet new friends. You can withdraw from the process at any time by working with your Recruitment Counselor.



**WE ARE EXCITED YOU HAVE CHOSEN  
WESTMINSTER COLLEGE!**

---

**GO  
GREEK!**

---

**WESTMINSTER COLLEGE  
INTERFRATERNITY COUNCIL**



WESTMINSTER  
COLLEGE

FULTON, MISSOURI

